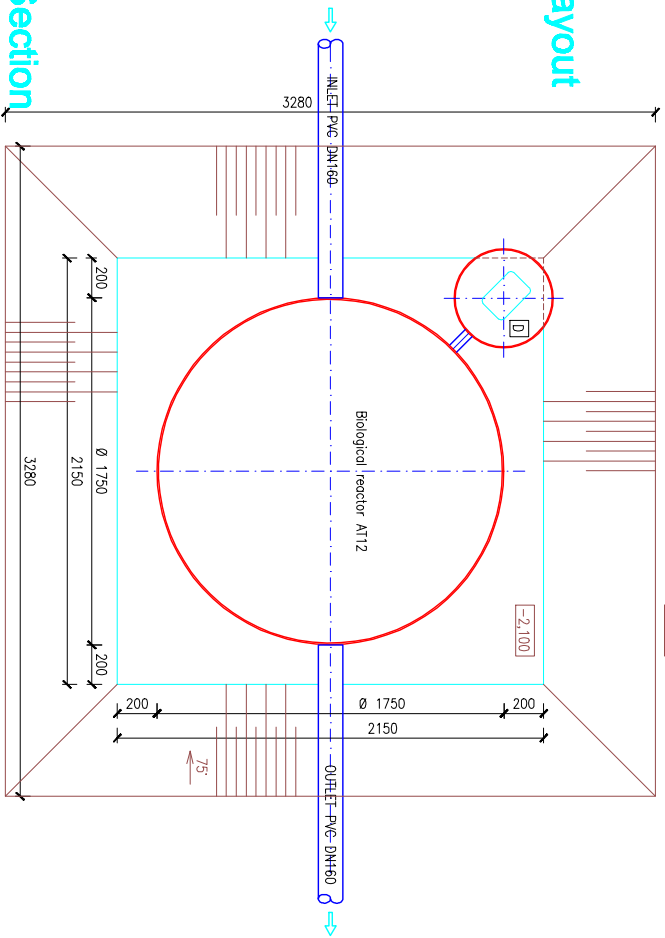
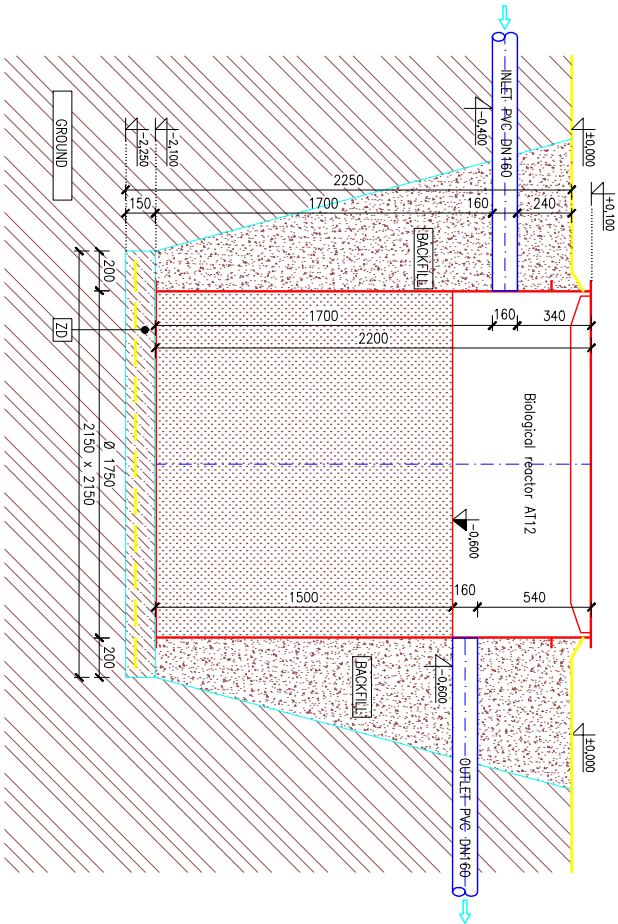


WASTEWATER TREATMENT PLANT FOR 10 PE (no ground water)

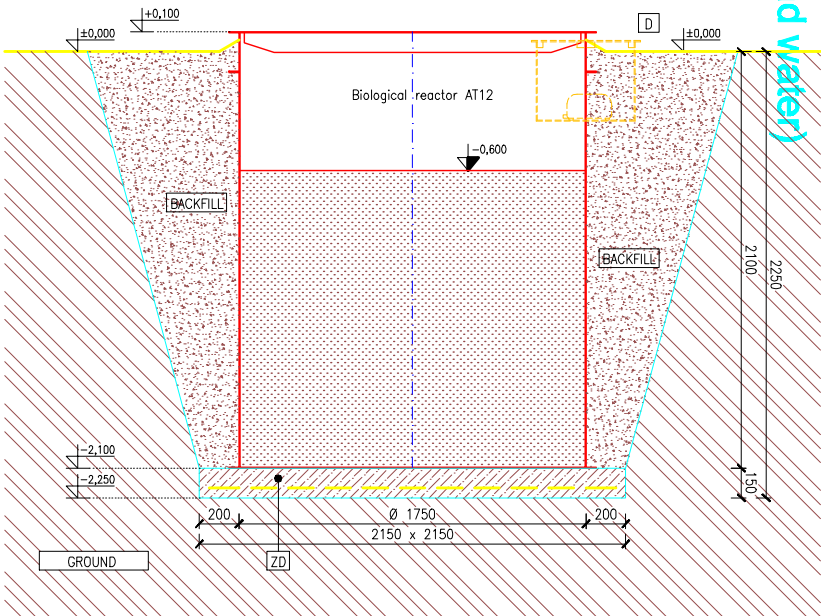
Layout



Section



Section



- BACKFILL**
SAND OR WELL-GRADED GRAVEL,
OR USING THE EXCAVATED EARTH FROM THE HOLE WITHOUT OVERSIZE
MATERIALS LIKE ROCKS, WITHOUT CLAYS AND HIGHLY ORGANIC SOILS
- ZD**
STEEL REINFORCED CONCRETE SLAB WITH STANDARD MESH FABRIC Q188
(mesh 150X150 mm, wire ϕ 6 mm, concrete strength class B15)
- D**
TANK FOR BLOWER