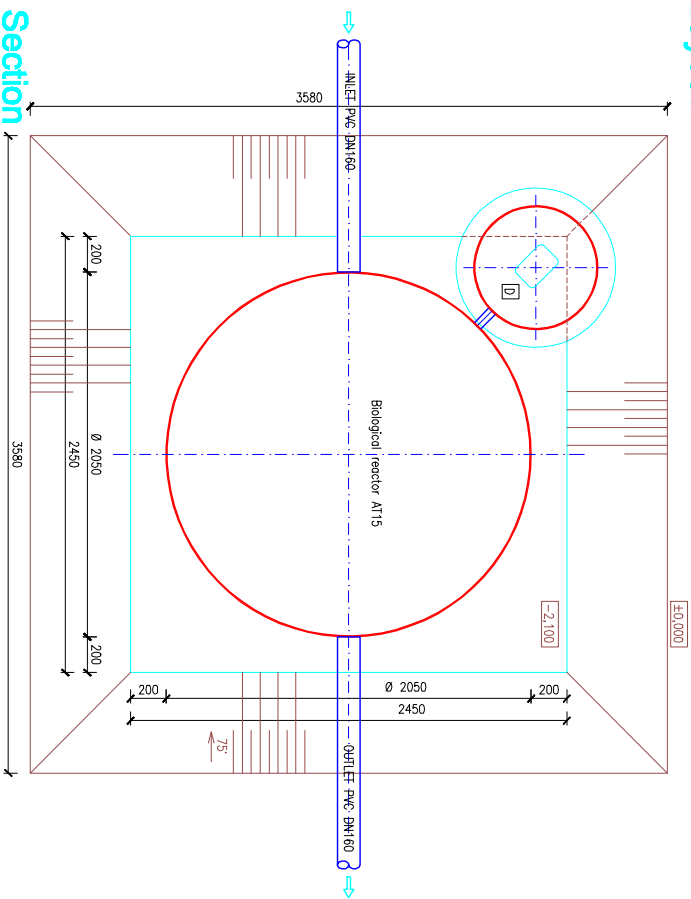
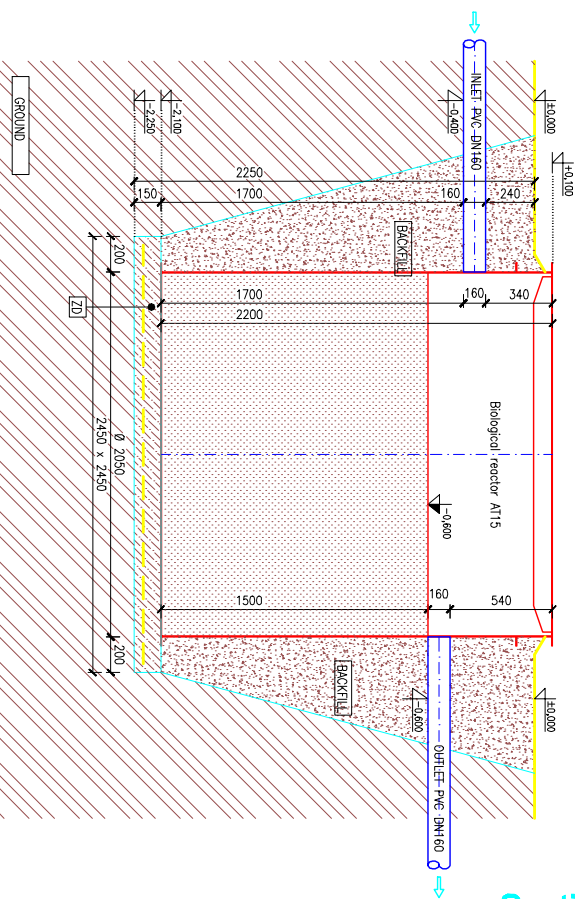


WASTEWATER TREATMENT PLANT FOR 12 PE (no ground water)

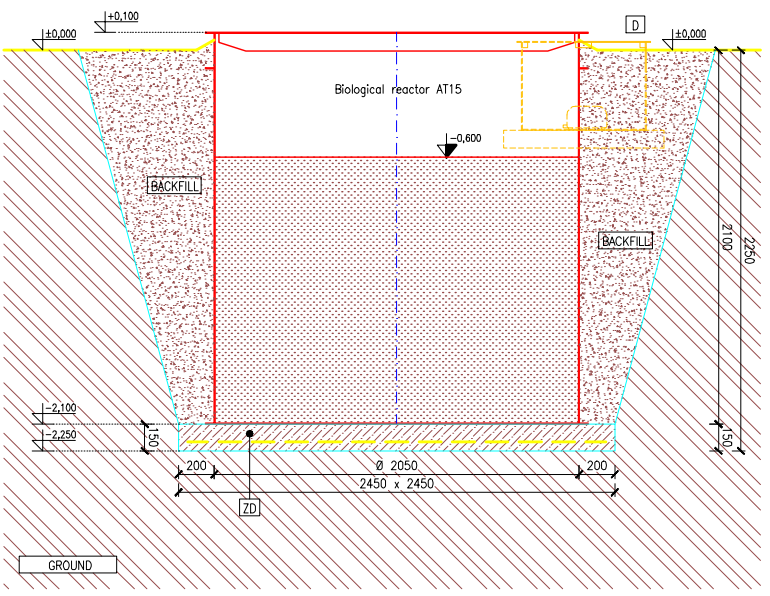
Layout



Section



Section



- [BACKFILL] SAND OR WELL-GRADED GRAVEL, OR USING THE EXCAVATED EARTH FROM THE HOLE WITHOUT OVERSIZE MATERIALS LIKE ROCKS, WITHOUT CLAYS AND HIGHLY ORGANIC SOILS
- [Z0] STEEL REINFORCED CONCRETE SLAB WITH STANDARD MESH FABRIC 0188 (mesh 150X150 mm, wire ø6 mm, concrete strength class B15)
- [D] TANK FOR BLOWER