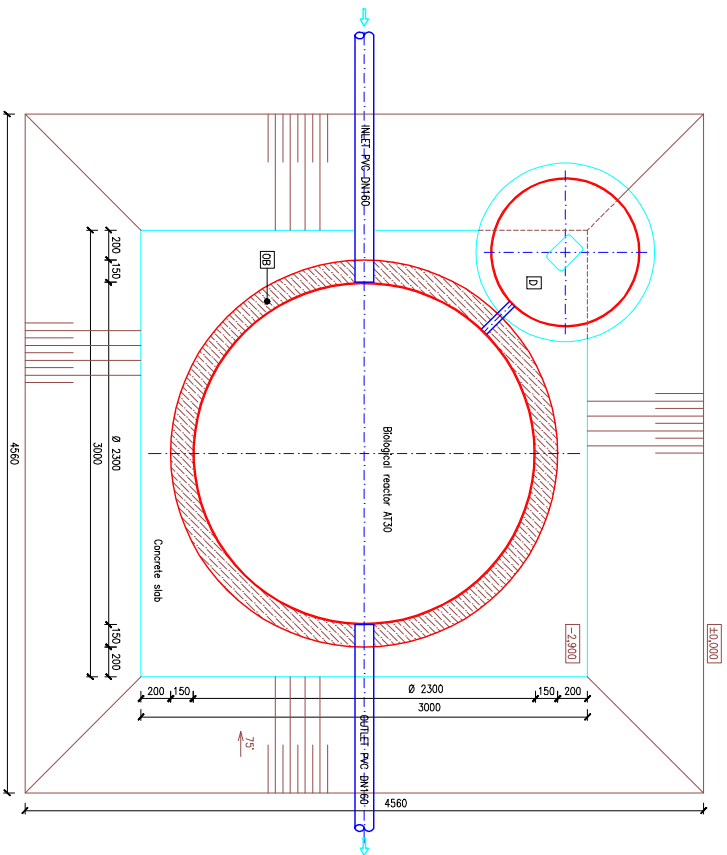
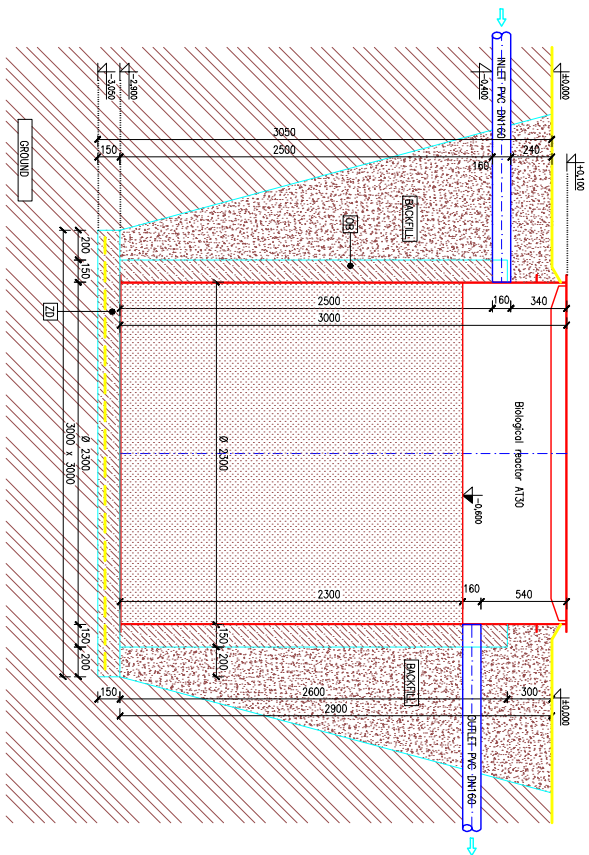


# WASTEWATER TREATMENT PLANT FOR 25 PE (no ground water)

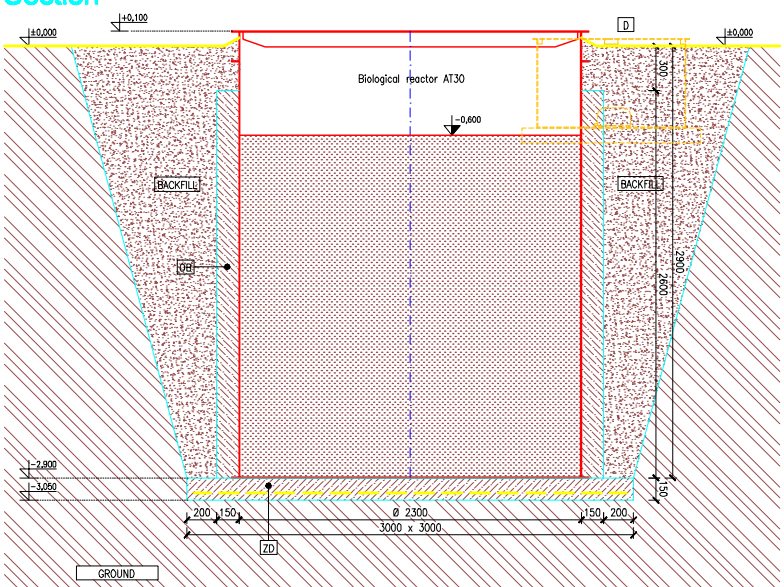
## Layout



## Section



## Section



- [BACKFILL] SAND OR WELL-GRADED GRAVEL, OR USING THE EXCAVATED EARTH FROM THE HOLE WITHOUT OVERSIZE MATERIALS LIKE ROCKS, WITHOUT CLAYS AND HIGHLY ORGANIC SOILS
- [ZD] STEEL REINFORCED CONCRETE SLAB WITH STANDARD MESH FABRIC Q188 (mesh 150x150 mm, wire 96 mm, concrete strength class B15)
- [D] TANK FOR BLOWER
- [DB] CONCRETE CASING OF THE PLASTIC TANK (concrete strength class B15)